

ITC Fortify



DISASTER RECOVERY / NETWORK REDUNDANCY
BUSINESS CONTINUITY. GUARANTEED.



ITC Fortify



CORPORATE OVERVIEW

ITC Global has been providing voice and data wide-area networking services to corporate and non-governmental organizations internationally for over twelve years. Typically, these customers are located in remote areas where conventional communication methods are not available or economically feasible. **ITC Global** has used its expertise in next-generation networking to provide innovative and cost-effective services to these customers.

ITC Global helps businesses, governments, and organizations to build high performance telecommunication networks based on enabling existing technologies and crafting them to our customers' needs. **ITC Global** has been providing services on a world-wide basis since 1994 and we have prided ourselves in offering a wide range of highly flexible, scalable, end-to-end satellite, terrestrial and wireless communication solutions.

Our capabilities include overall system design and development, total end-to-end network installation, implementation and outsourcing technical support services. Our satellite networking solutions are capable of supporting a wide variety of voice, data, video, and multi-media applications for enterprise, critical government, and organizational networks. In keeping with our turnkey solutions for our customers, **ITC Global** provides complete System Integration.

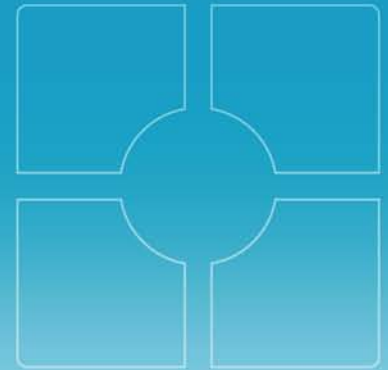
SERVICE OVERVIEW



Enterprises have begun to realize the tremendous potential of converged IP networks, with both private IP networks and the Internet becoming an integral component of many businesses.

As these enterprises implement mission-critical systems over IP, fault tolerant connectivity becomes imperative. Many enterprises will see their businesses seriously impacted after relatively short periods of downtime, yet most companies today have only one IP WAN connection. To ensure continual fault tolerance, backup link services should a) come from a different service provider, and b) follow a separate cable route. In many cases the costs of installing secondary links may be a factor in neglecting backup services, but more often, IT directors recognize that both their primary and secondary links follow the same cable path at some point, and are therefore susceptible to common single point failures, such as backhoe cuts or other disruptions. The additional security provided by a secondary, wire-based backup link is therefore significantly limited and difficult to cost justify.

ITC Fortify

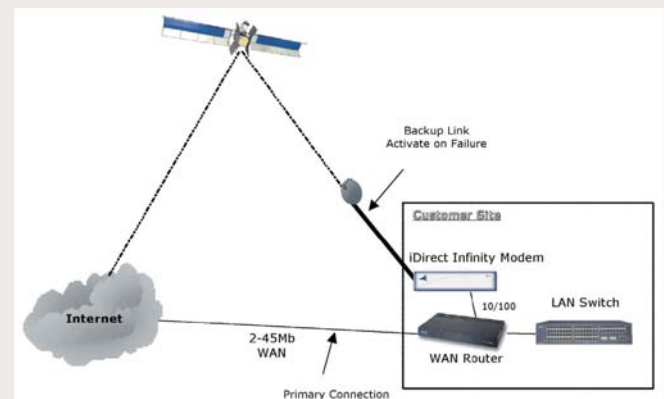


BENEFITS

The diagram on the right illustrates a typical network layout.

Internet traffic is normally sent out on the terrestrial link to the Internet. When the primary service provider or their circuit fails, traffic can be automatically routed via the satellite backup. This highly cost-effective service is offered at a low monthly price much like an inexpensive insurance policy. Per Diem charges are invoked once the link becomes utilized. The link is "live" at all times, however, so IT directors can test it with "pings" to ensure availability. Unlike land-based circuits that may take weeks or months to deploy, **ITC's** Business Continuity services can be delivered in a matter of a few days, and installed in mere hours.

An additional benefit of the **ITC** Business Continuity redundant link service is the ability to use the readily available bandwidth for special occasions. As companies evaluate their travel, meeting and training policies, many are considering the use of content delivery and video conferencing to reduce costs and address security concerns. **ITC** provides "on tap" bandwidth that can be used for these functions without impacting the primary corporate network.



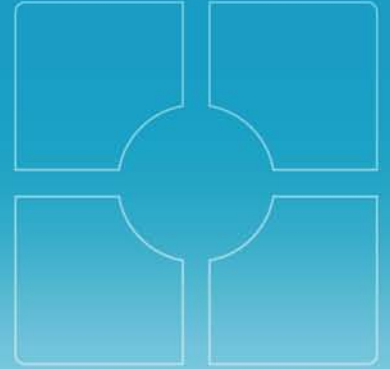
iDirect Disaster/Backup Network Diagram

BENEFITS

There are numerous benefits both from customer service and financial fronts, to an enterprise. Some of these benefits are:

- Back in business within minutes and not days
- Return on investment when used just once
- Rapid Installation
- Customer Satisfaction
- Very low monthly charge for "always on" connection
- Automatic service restoration within seconds of disaster / backup activation
- High speed connection options

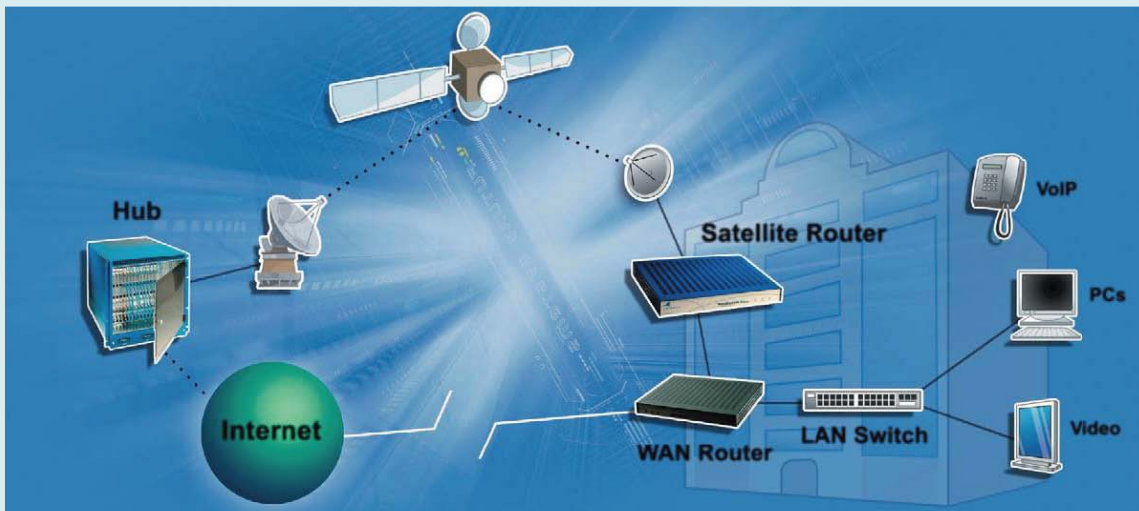
ITC Fortify



SYSTEMIC DIVERSITY



Typical Corporate Network

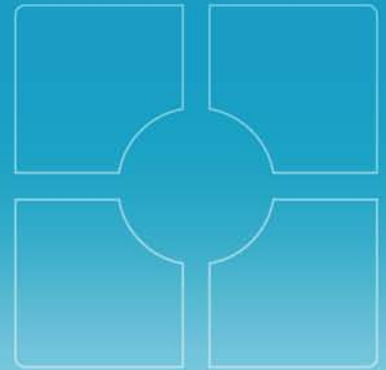


Business Continuity Solution using ITC Fortify.



ITC Fortify

SPECIFICATIONS



FEATURES & BENEFITS

Real time backup

No downtime, seamless cutover from primary network.

Low Cost

The service is designed around Minimum and Maximum CIR as in terrestrial based networks. No longer does a business need pay large recurring fees for idle bandwidth - pay only when you need it.

Secure

256 bit AES Encryption

Scalable

Burst up to 18Mbps

Extendibility

Complete redundancy solution for up to hundreds of sites on one seamless network.

TECHNICAL SPECIFICATIONS

ITC Business Continuity services are based on the industry leading iDirect satellite Hub architecture and delivered via our interconnected Hubs in Miami, Florida and Perth, Australia.

We maintain capacity on a number of satellites to ensure global coverage.

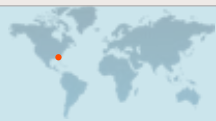
1.2 - 4.5m VSAT infrastructure required at each remote location (depending on location and network size).

TCP/HTTP acceleration and compression

Support for fully meshed (single hop) networks

MPLS, VLAN and QoS support

Voice prioritization standard



USA

▪ One Progress Plaza, Suite 720
St. Petersburg, FL 33701

▪ P +1 727 898 3835

▪ F +1 727 499 7918

▪ sales@itcglobal.net / www.itcglobal.net



AUSTRALIA

▪ Level 3, 28 Kings Park Road
West Perth, WA 6005

▪ P + 61 8 6263 0444

▪ F + 61 8 9310 1117

▪ sales@itcglobal.net.au / www.itcglobal.net.au