

# ITC Crew LIVE

A MODERN CREW WELFARE PLATFORM  
FOR COMPANY AND REMOTE STAFF



Live LIVE

# A WHOLE NEW APPROACH TO CREW CONNECTIVITY

ITC Crew LIVE is a modern crew welfare solution leveraging Panasonic's leading in-flight entertainment technology. Remotely located personnel can connect to people and information on their own mobile devices while companies achieve operational efficiencies and higher net profit.



## LIVECONNECTED

Catch the big match or the latest blockbuster movie and connect with the most important people in your life, all on your own mobile device. **Just like home.**



### ADVANCED, MULTI-PURPOSE CREW WELFARE SOLUTION

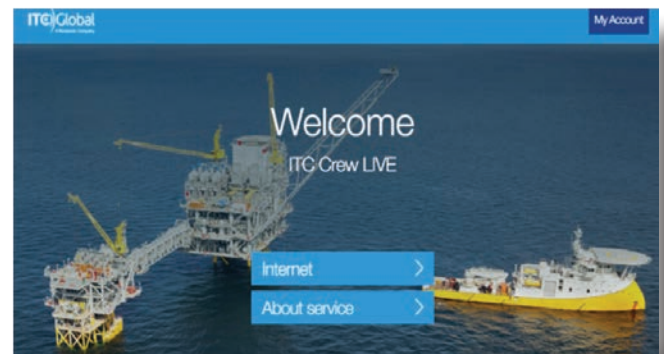
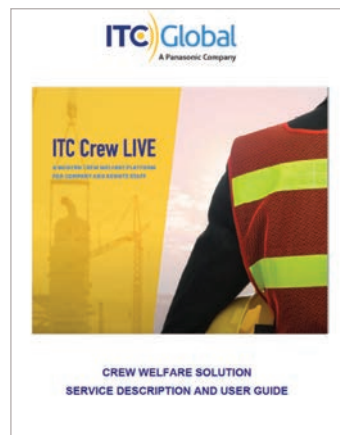
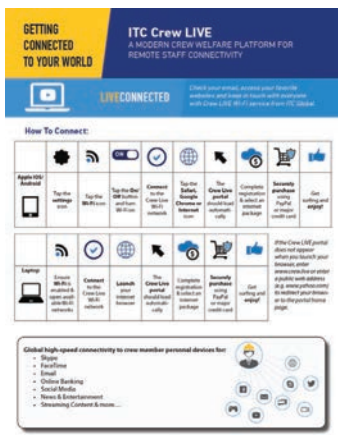
Content, data and voice in an easy-to-deploy, scalable solution delivered on an all-inclusive platform with a single, go-anywhere antenna. Full scale connectivity now available from a single provider.

#### Self-Service Portal

- Quick, easy enrollment
- Multiple payment options
- 24/7 technical support
- Account access at any Crew LIVE-equipped site

#### High-speed, Always-on Internet Service

- Competitive, on-demand pricing
- Multiple data allowance packages
- Average data download speeds of up to 8 Mbps



ITC Global provides extensive end-user resources, including comprehensive user-guide documentation, a *How to Connect* guide, and an overview on device data management.

Remote users can setup and access their personal account through the user-friendly self-service portal and select from multiple payment options.



## LIVEPRODUCTIVELY

*Modernize your crew welfare program while meeting the bottom-line needs of your business.*

### BRING YOUR OWN DEVICE



Crew comfort and less company hardware to manage.

## FLEXIBLE SERVICE MODELS

A variety of installation and deployment models allow your company to manage operational, business, and staff welfare objectives in a single solution that's scalable for future growth.

### Service Model Options



#### Managed Service

Fixed monthly service cost—customer can implement crew-funded, employer-funded or a subsidized crew welfare program.



#### Revenue Share

Customer and ITC Global share both service costs and revenue stream from crew-funded usage.



#### Zero Cost

ITC Global provides service at zero cost and collects revenue from crew-funded usage.

Upload  
**1-2** Mbps ↑  
Download up to  
**8** Mbps ↓

## EASY PLATFORM DEPLOYMENT

A single-point-of-entry portal offers easy access to all entertainment and communication services along with management functionality for online enrollment, payment, and usage reporting.

### Operational Efficiency

Monitor usage data, download speeds and total uptime with the ITC Crew Live portal, plus verify SLAs and validate your investment with easy reporting and quantified results.

### Single, Go-Anywhere Antenna

Save time and money with above and below deck equipment, streamlined for simple set-up and easy management—even when switching between ocean regions.



## LIVESECURELY

*Alleviate competing bandwidth priorities with separate networks for your company and remote personnel.*

## INDEPENDENT NETWORK FOR REMOTE STAFF

Separation between remote personnel and operational networks eliminates the security threats associated with after-hours devices connected across the same link that handles corporate traffic. Alleviating these competing usage priorities provides an optimal user experience for everyone during work and leisure time.

### Remove Security Risks

Crew LIVE eliminates the security threats associated with allowing remote workers to stay connected across the same link that handles corporate traffic.



**LIVECONFIDENTLY**

*Rely on Panasonic's network to ensure your first-rate staff and crew welfare program.*

**2TB**

of data moved over the Panasonic network every day.

**OPEN FOR BUSINESS: NETWORK SCALABILITY**



Panasonic's open network means capacity can be easily added as bandwidth needs grow.

### CONNECTIVITY ON THE PANASONIC NETWORK

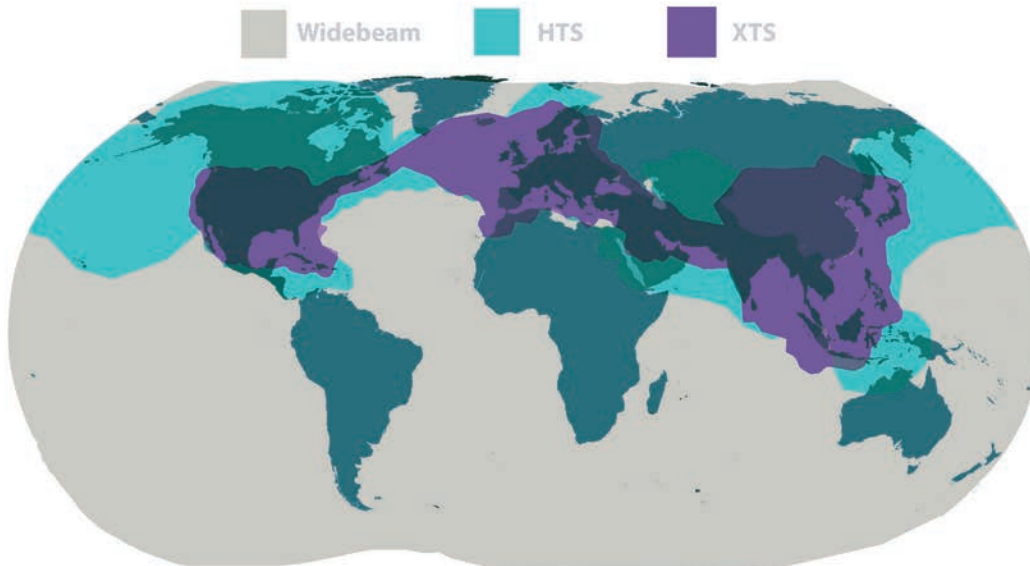
The value of any welfare program for remote staff and crew is only as good as the network that delivers it. The Panasonic Network is built for superior coverage where you need it, enabling maximum return on your investment.

#### The World's Most Capable Network

Designed and purpose-built by Panasonic, the Panasonic Network is setting new heights in performance standards. Our network delivers Ku-band connectivity on high-throughput satellites (HTS) and traditional wideband, revolutionizing today's VSAT market with game-changing pricing and service delivery to mining camps, energy operations, maritime vessels, and other remote sites.

- Near 100% uptime
- Up to 8 Mbps of throughput
- Coverage spanning 98% of the world's most trafficked maritime routes
- New custom-designed HTS satellites in use today
- Planned extreme-HTS (XTS) satellites underway

Panasonic's network gives ITC Crew LIVE comprehensive connectivity over land and oceans — rain or shine.



#### Wide-Beam & HTS Network

The Panasonic wide-beam network plus high-throughput satellites (HTS) and spot beams already in orbit give added boost to high-demand apps, in high-traffic areas.

#### XTS™ Planned Capacity

Powerful, eXtreme high-throughput satellites (XTS) will support the most bandwidth-hungry apps.



To learn more about ITC Global, visit [www.itcglobal.com](http://www.itcglobal.com) or email us at [sales@itcglobal.com](mailto:sales@itcglobal.com)

ITC Global © 2019. All Rights Reserved.